

## ABOUT OUR STUDIO...

Your full-service decorative glass and graphics art studio in south Pinellas, **Grand Central Stained Glass & Graphics** offers the solid reputation for quality in design and craftsmanship you seek.

## OUR GLASS SERVICES

### Classes & Lessons

Leaded Glass  
Copper Foil Stained Glass  
Fused Glass  
Traditional Glass Painting  
Lampworking/Beadmaking  
Mosaics  
Project Classes

### Studio Time

- Assisted** - Let us help you! We'll walk you through the tough spots saving you time & money!
- Unassisted** - You have the run of the place; use our entire studio! Spread out, use our equipment... save time, save money, have fun and most importantly, move forward!

### Commission Work

Beautify your home with the timeless, elegance of stained glass art. Let us work with you to co-create a piece as unique as you are. We spend the time *you* need to settle on just that right look & feel. Our design process includes supplying you with a full-color, full-sized pattern of the design for final on-site review and approval.

Each pattern is meticulously cut and assembled from a breathtaking array of art glass; then leaded or copper-foiled and soldered into its place. As applicable, final transportation and installation is always available.

Call or stop by today and discuss your ideas with us. We're happy to help!

## WIDE-FORMAT PRINTING

### Our Capabilities

When you're looking for a fresh, new look, think about us! Make your display, poster, sign or banner really POP! Add eye-catching, full color graphics or photographic images! They're stunning!

### Our Scale

We can print your design as wide as 44" and as long as 327" That's over 25 feet long!! We can enlarge your original 800% with no discernable degradation in image quality. What this all means to you is we can print BIG & in High Resolution!

### What We've Done

Full sized, Full Color Stained Glass Patterns  
Posters of all Sizes  
Indoor & Temporary Outdoor Banners  
Indoor & Temporary Outdoor Signs  
Window Signs  
Home Show Backdrops  
Musical Group Backdrops  
Photo Backdrops  
Wallpaper

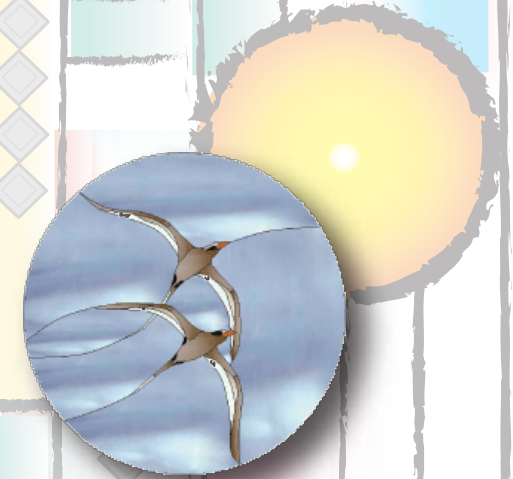
### What We Print On

(Roll or Cut Sheet)

All Types of Fine Art Papers  
Photo Paper - Bond Paper - Wallpaper  
Premier, Water Resistant Art Canvas  
Vinyl - Self Adhesive Vinyl - Films  
Backlit & Reverse Backlit Films  
Broadcloth - Cotton Lawn  
Cotton Sheeting - Crepe - Linen - Poplin  
Rayon Challis - Silk Chiffon  
Silk Crepe de Chine - Silk Habotai  
Silk Satin Charmeuse - Soft Denim - Twill

Call (727) 328-2428

## GRAND CENTRAL STAINED GLASS & GRAPHICS



## OUR SERVICES

2425 Central Avenue, St. Petersburg, FL 33713  
(727) 328-2428 - Fax (727) 323-2307  
e-mail: [info@grandcentralstainedglass.com](mailto:info@grandcentralstainedglass.com)  
[www.grandcentralstainedglass.com](http://www.grandcentralstainedglass.com)

**Call (727) 328-2428**

## ART GLASS EQUIPMENT & SUPPLIES

### Extensive Art Glass Inventory

Armstrong	Uroboros
Bullseye	Wissmach
Kokomo	Youghiogheny
Spectrum	

### C.O.E. 90, 96 & 104 Warm Glass

Bullseye	System 96 (Spectrum)
CBS Dichroic	Uroboros
Moretti	Wasser

### Power Equipment

Taurus Ring Saws
Inland Grinders
Diamond Tech Mitre Saws
Jen-Ken Kilns

### Glass Tools & Supplies

Morton Systems
Studio Pro Hand Tools
Weller Soldering Irons
Canfield Solders, & More!

### Fusing & Lampworking Tools & Supplies

Colour de Verre Casting System
Hot Head Torch Heads & Tools
Hot Rodz Rods, Frits & Powders
Little Fritters Molds
Mandrels, Marvers & Rakes
Moretti Glass Rods
Much, much more!

South Pinellas Complete  
Decorative Glass Studio

## GICLÉE PRINTMAKING SERVICES

### What is Giclée?

Giclée, pronounced "zhee-clay", is a sophisticated inkjet printing process rendering an original reproduction that has the look and feel of the original work of art. Giclées are created by applying an extraordinarily fine spray of ink onto the canvas or fine art paper that resulting in breathtaking color and appearance of continuous tones.

### Who Buys our Giclée Prints?

**Fine artists** seeking to market their work without the expense of a large, full-run of reproductions. We can print your work on an economical, as-needed basis, better matching supply and demand.

**Digital Artists and Photographers** seeking a high-quality output solution for their work.

**Businesses, Non-Profits and Fund-Raisers** seeking an impressive display, charitable contribution, fund-raising and/or gift-giving solution.

**Anyone** seeking a professional quality reproduction of special, heirloom original works. Parents; imagine capturing your child's artistic talent on canvas!

### Semi-Tech Stuff

We use only artist quality papers and/or canvas. Our color-managed workflow includes two Epson photographic scanners, an ImagePrint RIP tied directly to an Epson StylusPRO 9800, capable of printing 44" wide with a print resolution of up to 2880 x 1440 dpi. We use only Epson Ultrachrome K3 inks which renders a museum-quality print with an expected archival lifespan in excess of 100 years.

When you commission a giclée produced by us, you can rest assured that you are purchasing the finest reproduction available today.

## THE GICLÉE PROCESS

### The Image

We need a digital (electronic) image to work from. For digital artists your native file can most likely serve as your digital image.

If the original work of art is a picture or print already rendered onto paper or similar surface, it will need to be photographed or scanned into a digital format.

We have the capability to provide a high-resolution scan of your original work up to 11" x 17". If your original is larger than that it will need to be photographed and scanned. We can help you decide the best approach. We prefer to work with the following file formats:

**.psd - .tif - .ai - .pdf - .jpg - .gif**

### The Printmaking

Once the digital image is captured, we enlarge and color correct it to your specifications. We offer a proof copy of the image at no additional cost.

### The Curation

The prints are created and allowed to cure for 24 - 48 hours prior to any further work. We recommend a minimum of a laminate overspray to fix the inkset and guard against the effects of intense sunlight and dings due to moving.

We offer additional services as part of the post-printmaking process. They include:

- ✓ Hand-applied, acrylic brushstroking
- ✓ Mounting on artist-quality stretcher bars
- ✓ Provision of Certificates of Authenticity

Please speak to us about these optional services as your project warrants. We're happy to work with you to best reflect your ultimate vision!

Call (727) 328-2428